

## “6-Step, No-Cut/No-Splice” Wiring Installation Process

Installing a SoftStartRV™ A/C soft starter is very easy to do. While different A/C models have different components and wire colors, the wiring process can be summed up in 6 steps. The installation photos below give you a general idea of what to expect during your installation.

To be sure that your installation is done correctly, please use the wiring diagram for your specific A/C make and model. Click [here](https://www.softstartrv.com/diagrams) to find your model. ([link to:https://www.softstartrv.com/diagrams](https://www.softstartrv.com/diagrams))

### TOOLS AND SUPPLIES REQUIRED:

- Screwdriver or other tool to remove A/C cover
- Adjustable or socket wrench to remove electrical box cover and/or other component covers (if present)
- Wire crimpers
- Black electrical tape
- Other tools may be required depending on your A/C installation



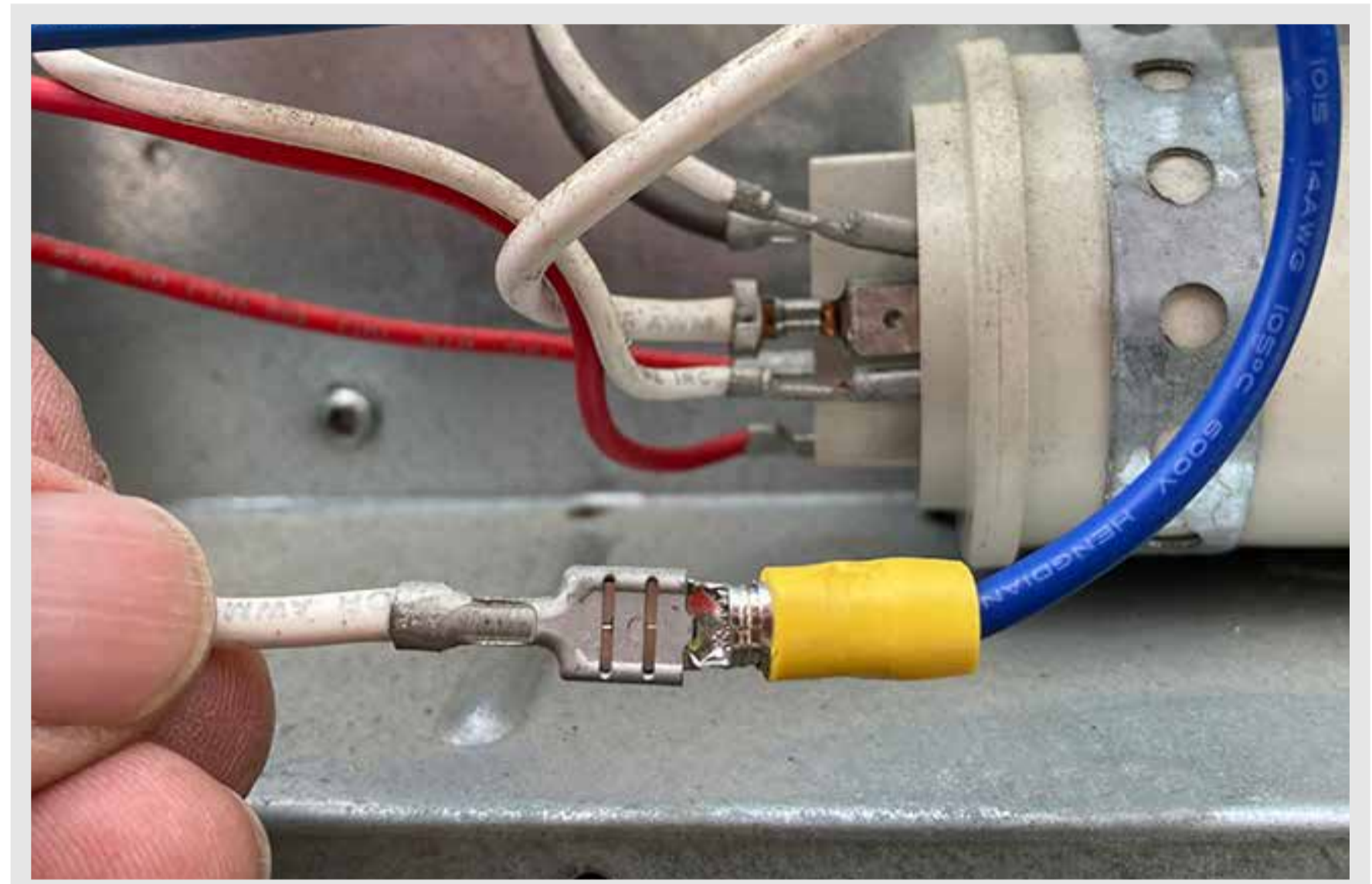
**BEFORE STARTING INSTALLATION, turn off all electrical power to the RV.**

After removing the A/C cover, set the SoftStartRV unit near the electrical box and unwind the wiring harness. Route the correct colored wires into the electrical box and to the compressor (see specific diagram instructions on the Support page). Remove small, pre-cut piece of wire cover on end of wires. Crimp connectors onto ends of wires as indicated on your diagram.



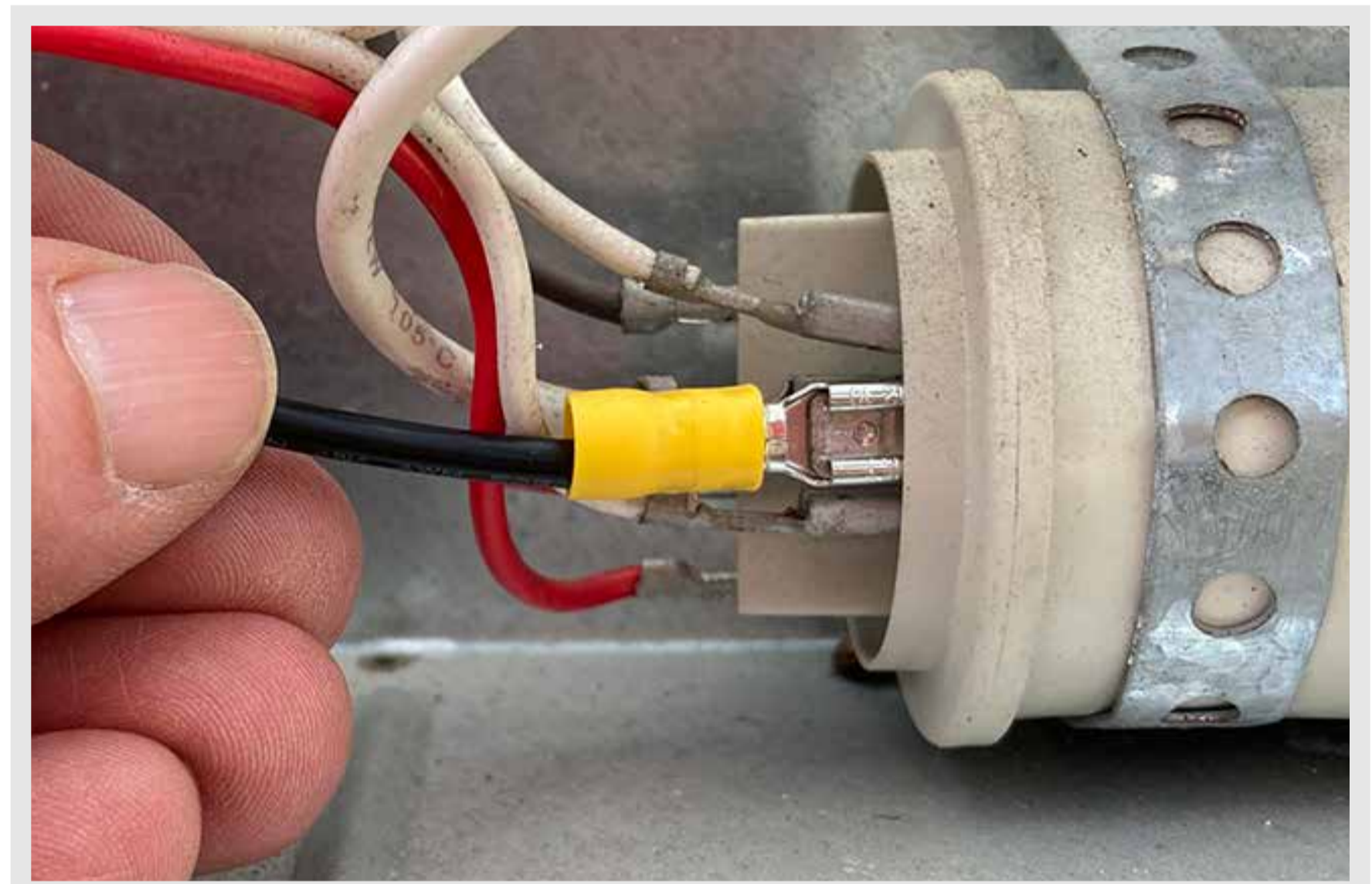
①

Follow White Compressor wire from Compressor to Run Capacitor “C” terminal. Disconnect from “C” terminal and connect it to Blue SoftStart wire. Seal connection with black electrical tape.



②

Connect Black SoftStart wire to the terminal that the White Compressor wire was on.



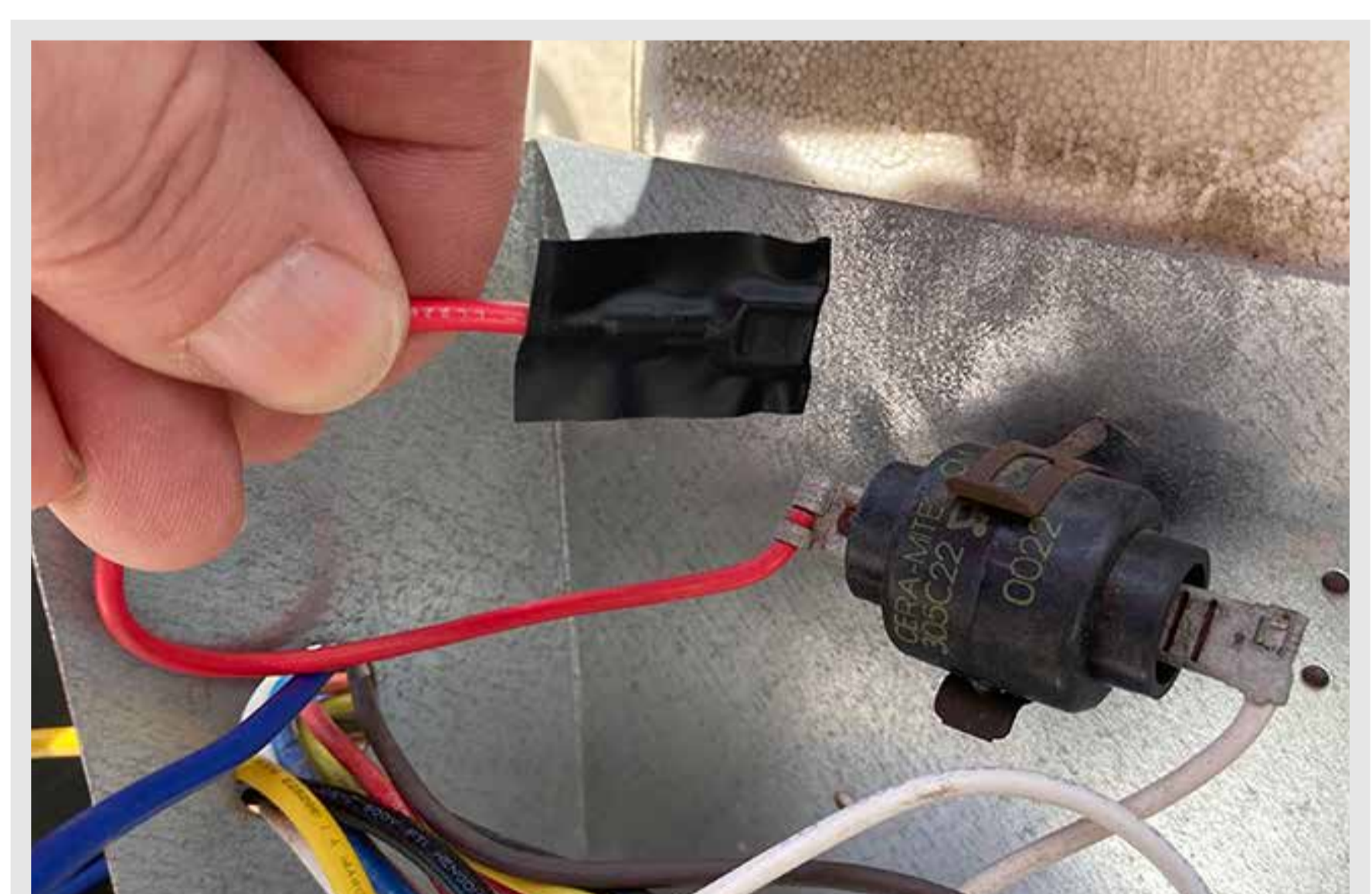
③

Connect Yellow SoftStart wire on terminal next to Red Compressor wire on HERM Side of Run Capacitor.



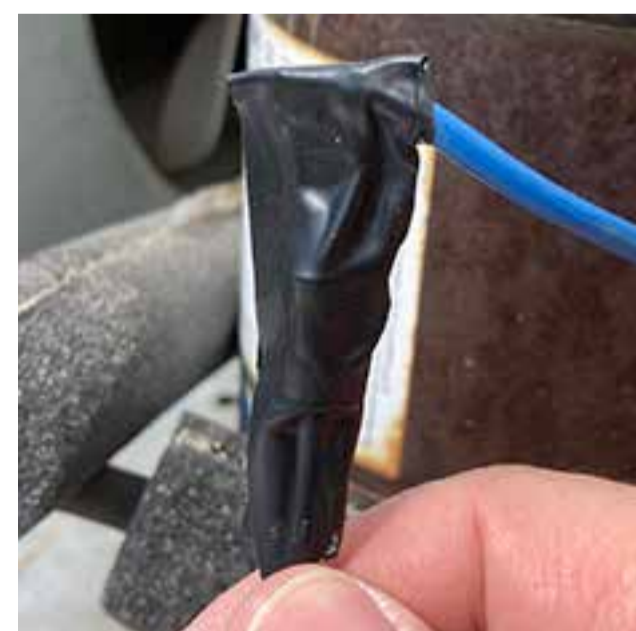
④

**IF you see a second Red wire** (running from the Start Capacitor or another component) next to the Red Compressor wire on the Run Capacitor, disconnect it and seal end with electrical tape.



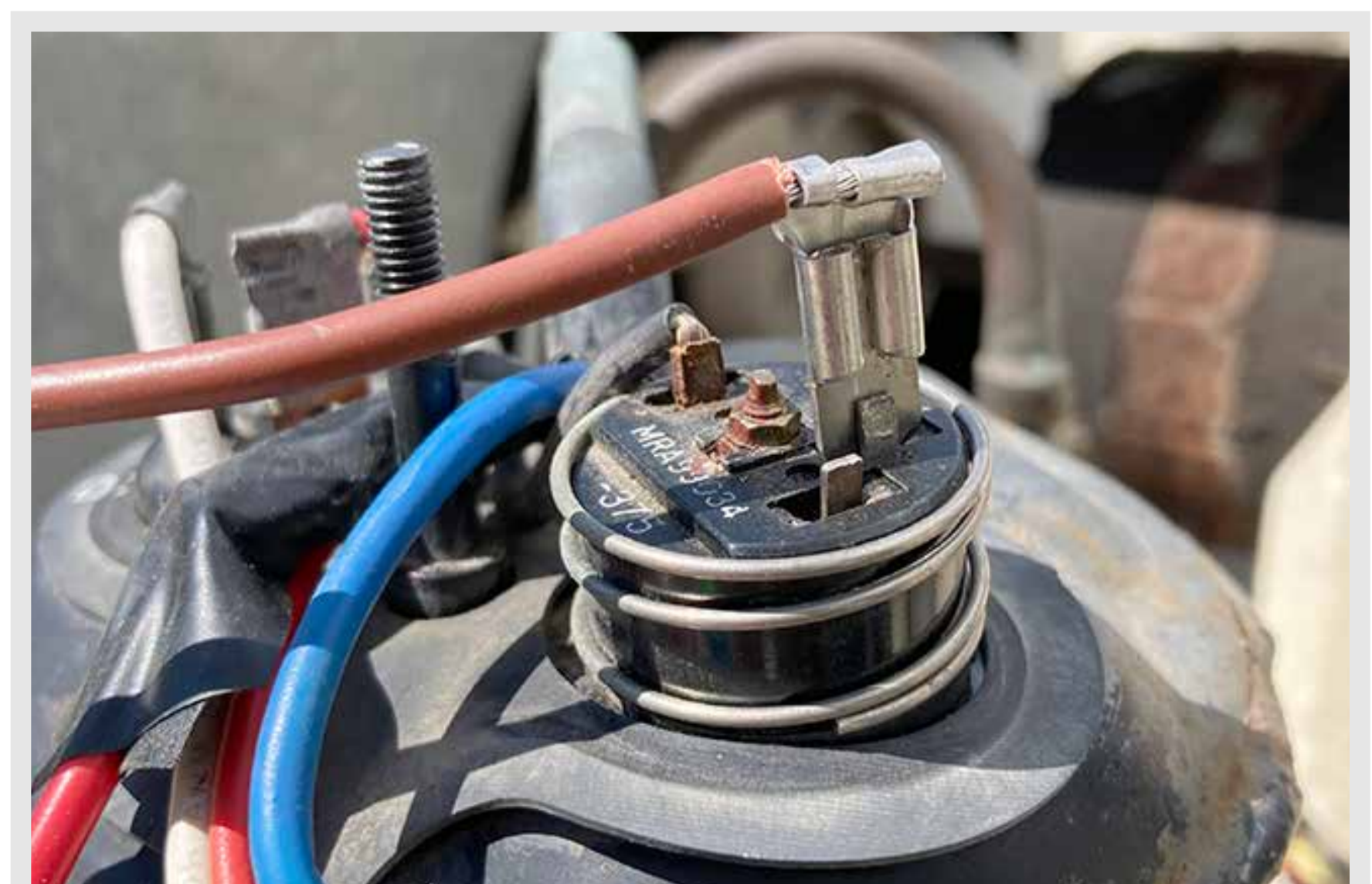
⑤

Remove Compressor cap. Disconnect Blue Compressor wire and connect to Red SoftStart wire. Seal connection with black electrical tape.



⑥

Connect Brown SoftStart wire onto the terminal that the Blue Compressor wire was on. Route wire to exit cap with Red and White wires. Re-attach Compressor cap.



Using the adhesive strip on the back and/or the self-tapping fasteners, install the SoftStartRV unit with the wires at the bottom of the unit. If you have to install it at an angle, the wires should be angled toward the bottom.

Follow all installation and start-up instructions on your specific wiring diagram.

