

Installation Instructions

RV5

10" King Pin Extender
Fits standard OEM pin box

www.popuphitch.com



Revised 1/8/16



4330 S. Johnson Rd.
Chanute, KS 66720
800-837-8578
info@popuphitch.com
US Patents 6,629,700 & 6,883,820

CAUTION:

WARNING: Verify adequate trailer swing clearance between trailer nose and cab of truck, and trailer and rear of truck.

WARNING: 5th wheel hitch control handles that rise above the hitch deck can be damaged by the RV5 during trailer swing. It may be necessary to modify the control handles by lowering them below the hitch deck.

NOTICE: The RV5 king pin extender will raise the trailer height 3-1/2". For a level trailer it may be necessary to lower the 5th wheel hitch and/or raise the king pin box. **Inspect existing welds on the current king pin box.**

Model RV5

WARNING: Verify adequate trailer swing clearance between trailer nose and cab of truck, and trailer and rear of truck

Use of Adapters is NOT RECOMMENDED on cushioned king pin boxes.

1. Remove lube plate if so equipped and thoroughly de-grease the king pin and the bottom of the king pin plate before proceeding. Position the hole in the 10" x 10" RV5 top mounting plate over your king pin and against your king pin box with the extended king pin facing forward. With the RV5 square to the king pin box secure in position with vise clamps.
2. Position the king pin clamp on the king pin with the four cup point set bolts down and with the two 3/4" holes accessible through the large holes in the side of the RV5. Insert two 3/4" bolts and snug. Square the king pin clamp to the RV5 and **torque bolts to 240 ft. lbs.**
3. Alternately tighten the four Cup Point Set Bolts in the King Pin Clamp against the king pin box. **Torque to 85 ft. lbs.** Tighten once, its not necessary to retighten.
4. It is also necessary to bolt the RV5 to the king pin box.

Bolting to a 10"x10" or larger king pin plate, that is at least 1/4" thick: Install the eight 3/8" bolts provided in the four holes closest to the corners of the king pin plate. Bolts should also be installed in the four center holes on all four sides of the king pin plate if fitting them is possible.

If you have access inside the king pin box, drill 3/8" holes and use washers and nuts to fit the 3/8" bolts. **Torque to 28 ft. lbs.** If the king pin box is sealed, mark the hole centers, drill 5/16" holes and tap to 3/8"-16. Fit the 3/8" bolts. **Torque to 20 ft. lbs.**

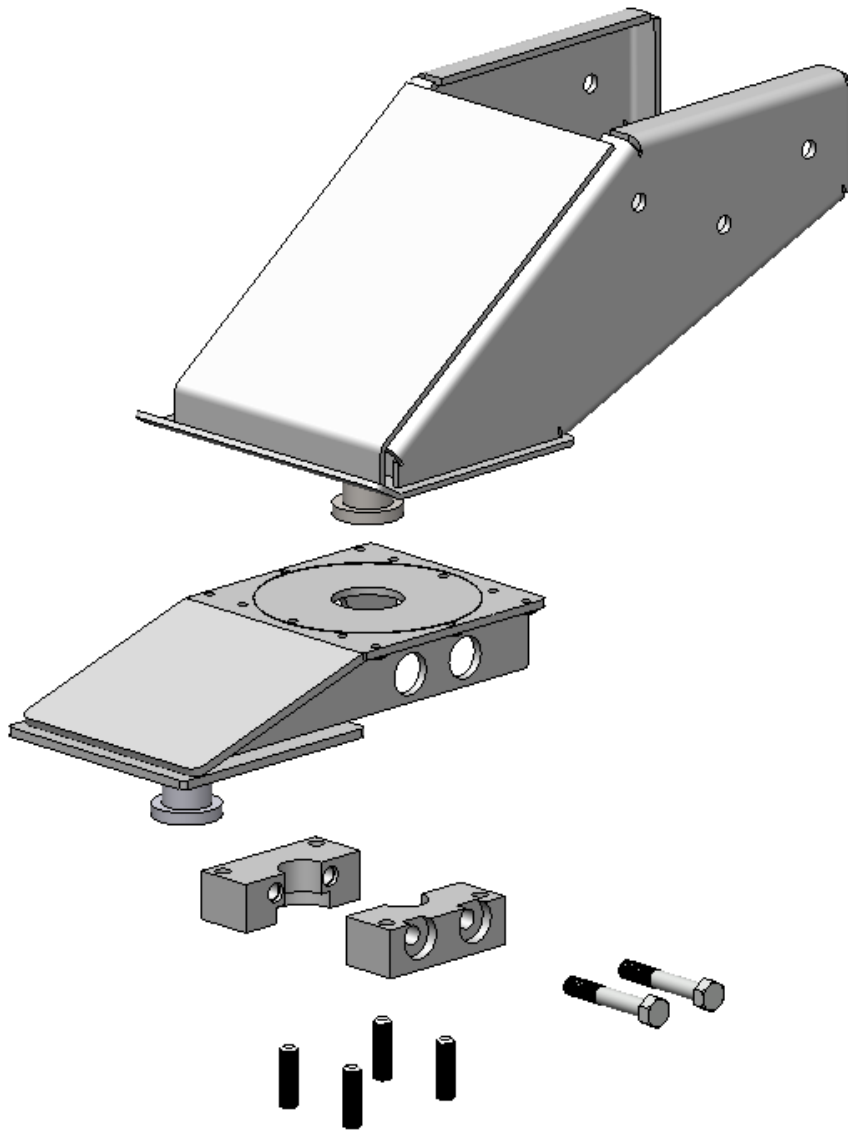
Under-size King Pin Plate: A king pin plate that is smaller than 10"x10" requires welding for a safe installation, when it is not possible to bolt through the perimeter mounting holes, have a qualified welder apply a stitch weld where the king pin plate and RV5 unit meet.

Light Gauge King Pin Plate: A king pin plate less than 1/4" thick should not be drilled and tapped for installing the 3/8" perimeter mounting bolts. For these installations, use heavy washers with nuts on the top side of the king pin plate. If access inside the king pin box is not possible, have a qualified welder apply a stitch weld where the king pin plate and RV5 meet.

5. Before towing, lightly lubricate the RV5 king pin with lithium or synthetic grease.

Model Number RV5
Gross Trailer Weight: 24,000 lbs.
Gross Trailer Tongue Weight: 6,000 lbs.

(page 1 of 2)



Hardware Provided

- 2 - 3/4" x 10 x 3 1/4"
- 4 - 3/4" x 10 x 2 1/2" set bolts
- 8 - 3/8" lock nuts
- 8 - 3/8" x 1/2" bolts
- 8 - 3/8" flat washers
- 1 - Clamp block



Please call or email with questions.
Call us at 800-837-8578 or
email us at info@popuphitch.com

Model Number RV5
Gross Trailer Weight: 24,000 lbs.
Gross Trailer Tongue Weight: 6,000 lbs.