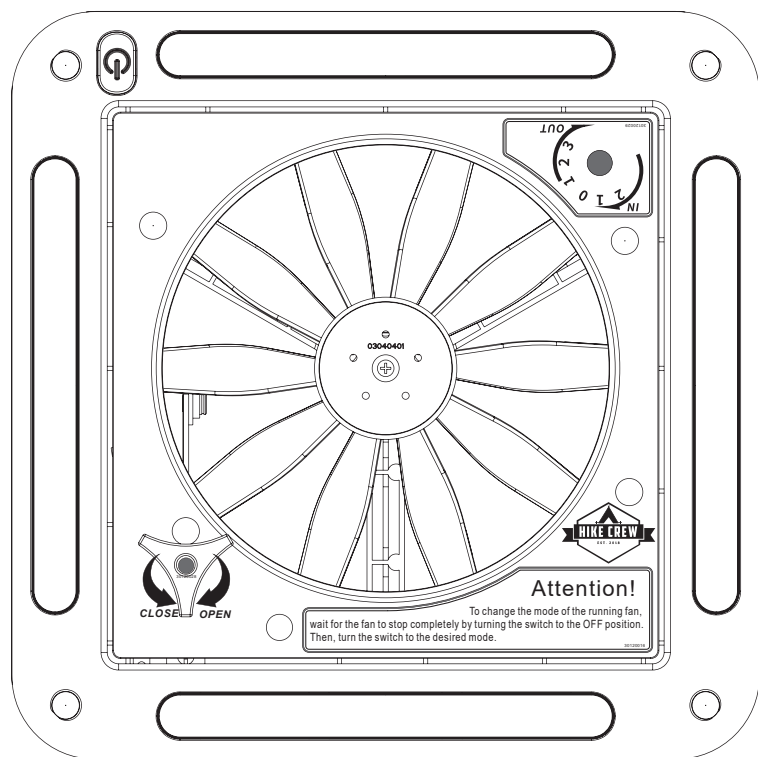




MANUAL RV ROOF VENT FAN

USER GUIDE

HCRVVF11 / HCRVVF14



Thank you for purchasing the Hike Crew Manual RV Roof Vent Fan. This User Guide is intended to provide you with guidelines to ensure that operation of this product is safe and does not pose risk to the user. Any use that does not conform to the guidelines described in this User Guide may void the limited warranty. Please read all directions before using the product and retain this guide for reference. This product is intended for household use only. It is not intended for commercial use. This product is covered by a limited one-year warranty. Coverage is subject to limits and exclusions. See warranty for details.

SAFETY PRECAUTIONS

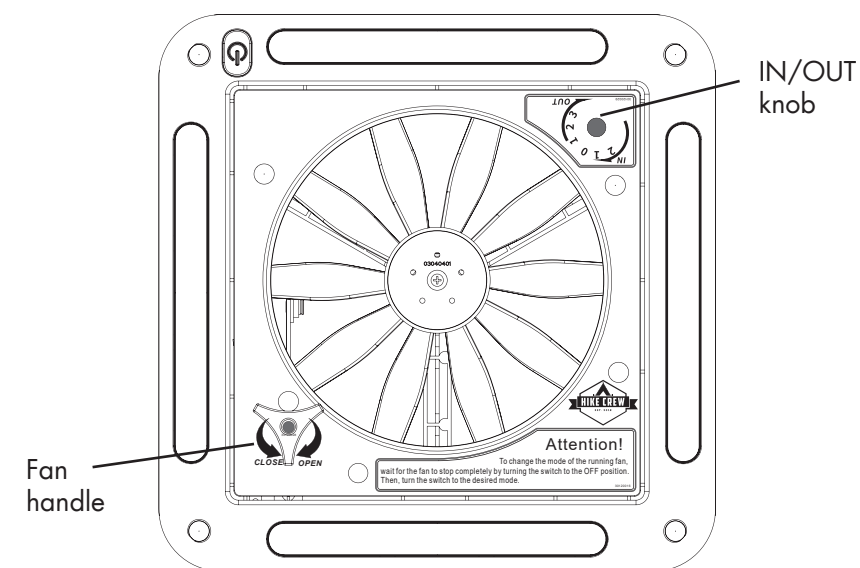
WARNING! Please read and understand all safety precautions, installation instructions, and operating instructions before operating this appliance. Failure to properly follow the guidelines established here could result in severe injury, fire or even death. Keep this manual for future reference.

- **FALL HAZARD:** Vent fans are normally located on the roof of an RV. It is inherently dangerous to climb onto the roof of an RV to perform installation, maintenance, or repairs on a vent fan. Take appropriate precautions when climbing onto the roof of an RV or when working on the roof of an RV. Failure to do so could result in a fall, causing serious injury or death.
- Keep appliance away from children. Never let children operate the unit.
- Do not modify or alter this appliance.
- Ensure appliance is disconnected from power supply before performing the installation process. Failure to do so could result in severe injury.
- Do not leave the vent fan lid open and unattended for extended periods of time, or under unusual weather conditions that may result in leakage and serious damage.
- Do not use this product in harsh weather conditions.
- Do not wear or hold loose clothes, fabric, jewelry, or other materials near vent fan. If anything gets caught in the fan blades, unplug the fan immediately and then remove the blockage, to avoid injury.

PACKAGE CONTENTS

Manual RV roof vent fan (11" or 14")
User guide

PRODUCT OVERVIEW



Recommended Tools:

- Measuring tape
- Philips screwdriver
- Waterproof sealant
- Pencil
- Drill

INSTALLATION INSTRUCTIONS

NOTE: Make sure appliance is disconnected from power supply before starting the installation process.

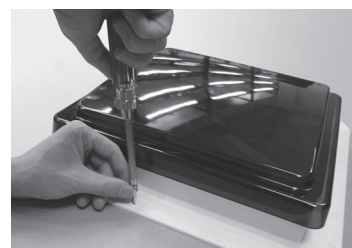
1. Hike Crew RV Roof Vent Fan requires an 11" by 11" or 14" by 14" roof opening depending on the fan size being used. Place the mounting flange into the roof opening (with the fan lid opening facing the rear of the RV) and trace the outline of the mounting flange with a pencil. (You will need to be on the roof of the RV to install the mounting flange.)

NOTE: If replacing a vent fan, make sure when removing old vent fan to remove all old sealant. Clean the surrounding roof opening of any sealant or other debris. Check roof opening for any damages or leaks before continuing new installation.

2. Remove the mounting flange from the roof opening and turn it upside down. Apply compatible sealant or caulking on the underside of the mounting flange.



3. Flip the fan over and carefully lower the fan into the roof opening. Use the traced outline to position the fan correctly.

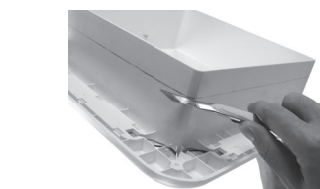


4. Press the mounting flange down onto the RV roof to secure the fan.

5. Fasten mounting flange to the roof with provided screws.

6. Apply additional sealant over the screws and around the mounting flange to avoid gaps and holes in the caulking.

7. Using the electrical wiring provided, connect the fan's power wires to the RV's 12 V power supply.



NOTE: Red wire must be connected to the vehicle's positive terminal while the black wire is connected to the negative terminal. The blue wire connects to the brake control system of the vehicle.

8. Measure the thickness of the RV roof. If your roof is thinner or the length of the interior garnish is too long. The garnish can be trimmed down to fit in your roof opening.

9. Place interior garnish over fan from inside of the RV. Install the interior garnish securely with provided screws.



OPERATING INSTRUCTIONS

Opening Fan Cover Lid

NOTE: Do not use excessive force when operating knob.

1. Pull handle to unlock fan lid.
2. Rotate handle clockwise to open fan lid.
3. Rotate handle counter-clockwise to close fan lid.
4. Push handle in to lock fan lid in its current position.

IN/OUT Knob Functions

Use the fan's IN/OUT knob to reverse the direction of the fan. To change the direction of the fan, first turn off the fan using the POWER button. Once the fan comes to a complete stop, turn knob to desired speed and press the POWER button once more. The fan has different speeds depending the direction of the air flow. If the air flows IN, there are two speeds. If the air flows OUT, there are three speeds.

The fan speeds are:

- 0 – OFF
- 1 – LOW
- 2 – MEDIUM
- 3 – HIGH

CARE/MAINTENANCE

1. Turn off fan and disconnect wiring from RV power supply before inspecting and cleaning fan.
2. Place a good amount of denatured or rubbing alcohol on a clean rag and wipe down the underside of the fan cover lid.
3. Hold down fan blades in order to remove screw located at the center of the fan blade. Once the fan blades are removed, use soap and warm water to clean it.
4. Screw fan blades back onto foundation once it is clean and dry.
5. Reconnect wires when the maintenance and cleaning process is finished.

SPECIFICATIONS

HCRVVF11 Dimensions: 11" x 11" (280 x 280 mm)

HCRVVF14 Dimensions: 14" x 14" (360 x 360 mm)

HCRVVF11 Weight: 7.9 lbs. (3.6 kg)

HCRVVF14 Weight: 10 lbs. (4.5 kg)

Rated Power: 5 – 40 W

Rated Voltage: 12 V DC

Exhaust Flow Rate: 10 – 15 m³/min

GET IN TOUCH!

info@supportcbp.com | 1-833-855-1816

WARRANTY INFORMATION

LIMITED WARRANTY ON HIKE CREW MANUAL RV ROOF VENT FAN

THIS LIMITED WARRANTY GIVES YOU SPECIFIC LEGAL RIGHTS AND YOU MAY ALSO HAVE OTHER RIGHTS, WHICH VARY FROM STATE TO STATE.

WE WARRANT THAT DURING THE WARRANTY PERIOD, THE PRODUCT WILL BE FREE FROM DEFECTS IN MATERIALS AND WORKMANSHIP.

LIMITATION OF LIABILITY

TO THE EXTENT NOT PROHIBITED BY LAW, THIS WARRANTY IS EXCLUSIVE AND IN LIEU OF ALL OTHER WARRANTIES, ORAL, WRITTEN, STATUTORY, EXPRESS OR IMPLIED. EXCEPT FOR THE EXPRESS WARRANTIES CONTAINED IN THIS LIMITED WARRANTY STATEMENT AND TO THE EXTENT NOT PROHIBITED BY LAW, WE DISCLAIM ALL OTHER WARRANTIES, EXPRESSED OR IMPLIED, STATUTORY OR OTHERWISE, INCLUDING WITHOUT LIMITATION, THE WARRANTIES OF MERCHANTABILITY AND FITNESS FOR A PARTICULAR PURPOSE. SOME STATES DO NOT ALLOW DISCLAIMERS OF IMPLIED WARRANTIES, SO THIS DISCLAIMER MAY NOT APPLY TO YOU. TO THE EXTENT SUCH WARRANTIES CANNOT BE DISCLAIMED UNDER THE LAWS OF YOUR JURISDICTION, WE LIMIT THE DURATION AND REMEDIES OF SUCH WARRANTIES TO THE DURATION OF THIS EXPRESS LIMITED WARRANTY.

OUR RESPONSIBILITY FOR DEFECTIVE GOODS IS LIMITED TO REPAIR, REPLACEMENT OR REFUND AS DESCRIBED BELOW IN THIS WARRANTY STATEMENT.

WHO MAY USE THIS WARRANTY? C&A Marketing, Inc. located at 114 Tived Lane East, Edison, NJ ("we") extend this limited warranty only to the consumer who originally purchased the product ("you"). It does not extend to any subsequent owner or other transferee of the product.

WHAT DOES THIS WARRANTY COVER? This limited warranty covers defects in materials and workmanship of the Hike Crew Manual RV Roof Vent Fan (the "product") for the Warranty Period as defined below.

WHAT DOES THIS WARRANTY NOT COVER? This limited warranty does not cover any damage due to: (a) transportation; (b) storage; (c) improper use; (d) failure to follow the product instructions or to perform any preventive maintenance; (e) modifications; (f) unauthorized repair; (g) normal wear and tear; or (h) external causes such as accidents, abuse, or other actions or events beyond our reasonable control.

WHAT IS THE PERIOD OF COVERAGE? This limited warranty starts on the date of your purchase and lasts for one year (the "Warranty Period"). The Warranty Period is not extended if we repair or replace the product. We may change the availability of this limited warranty at our discretion, but any changes will not be retroactive.

WHAT ARE YOUR REMEDIES UNDER THIS WARRANTY? With respect to any defective product during the Warranty Period, we will, at our sole discretion, either: (a) repair or replace such product (or the defective part) free of charge or (b) refund the purchase price of such product if an exchange unit cannot be provided.

HOW DO YOU OBTAIN WARRANTY SERVICE? To obtain warranty service, you must contact us at 1-833-855-1816 or by email at info@supportcbp.com during the Warranty Period to obtain a Defective Merchandise Authorization ("DMA") number. No warranty service will be provided without a DMA number and return shipping costs to our facilities shall be assumed by you, the purchaser. Shipping costs of the replacement unit to you shall be assumed by us.

Hike Crew is a trademark of C&A IP Holdings LLC, in the U.S.

All other products, brand names, company names, and logos are trademarks of their respective owners, used merely to identify their respective products, and are not meant to connote any sponsorship, endorsement, or approval.

Distributed by C&A Marketing, Inc., 114 Tived Lane East, Edison, NJ 08837

Made in China

© 2021. C&A IP Holdings LLC. All Rights Reserved.